



## Owner's Manual & Safety Instructions

**⚠ WARNING**

Read this manual before using this product.  
Failure to do so can result in serious injury.  
SAVE THIS MANUAL.



## INDEX

---

1.	Work Area Safety	-----	01
2.	Electrical Safety	-----	02
3.	Personal Safety	-----	03
4.	Machine Diagram	-----	04
5.	Parts List	-----	05
6.	Declaration	-----	06

---

**General Safety Warnings:** Read all safety warnings, instructions, illustrations and specifications provided with this appliance. Failure to follow all instructions listed below may result in electric shock, fire and/or serious injury.

Save all warnings and instructions for future reference.

The term “appliance” in the warnings refers to your mains-operated (corded) appliance or battery-operated (cordless) appliance.

### 1) Work area safety

- a) Keep work area clean and well lit. Cluttered or dark areas invite accidents.
- b) Do not operate appliances in explosive atmospheres, such as in the presence of flammable liquids, gases or dust.

### 2) Electrical safety




- a) Appliance plugs must match the outlet. Never modify the plug in any way. Do not use any adapter plugs with earthed (grounded) appliances. Unmodified plugs and matching outlets will reduce risk of electric shock.
- b) Avoid bodily contact with earthed or grounded surfaces, such as pipes, radiators, ranges and refrigerators. There is an increased risk of electric shock if your body is earthed or grounded.
- &D Do not expose appliances to rain or wet conditions. Water entering an appliance will increase the risk of electric shock.
- åD Do not abuse the cord. Never use the cord for carrying, pulling or unplugging the appliance. Keep cord away from heat, oil, sharp edges or moving parts. Damaged or entangled cords increase the risk of electric shock.
- e) If operating an appliance in a damp location is unavoidable, use a residual current device (RCD) protected supply. Use of an RCD reduces the risk of electric shock.

### **3) Personal safety**

- a) Stay alert, watch what you are doing and use common sense when operating the appliance.
- b) Ensure the switch is in the OFF-position before disconnecting and picking up or carrying the appliance.

### **4) Appliance use and care**

- a) Do not use the appliance if the switch does not turn it ON and OFF. Any appliance that cannot be controlled with the switch is dangerous and must be repaired.
- b) Disconnect the plug from the source before making any adjustments, changing accessories, or storing appliances. Such preventive safety measures reduce the risk of starting the appliance accidentally.
- c) Store idle appliances out of the reach of children and do not allow persons unfamiliar with the appliance or these instructions to operate the appliance.
- d) Maintain appliances and accessories. Check for misalignment or binding of moving parts, breakage of parts and any other condition that may affect the appliance's operation. If damaged, have the appliance repaired before use. Many accidents are caused by poorly maintained appliances.

SYMBOL	DESCRIPTION
	Read the manual before set-up and/or use.
	Do not dispose with house-hold waste.
	Conforms to relevant safety standards.

**ASSEMBLING:**

Attach the polishing mop head to the backing pad.

**OPERATING:**

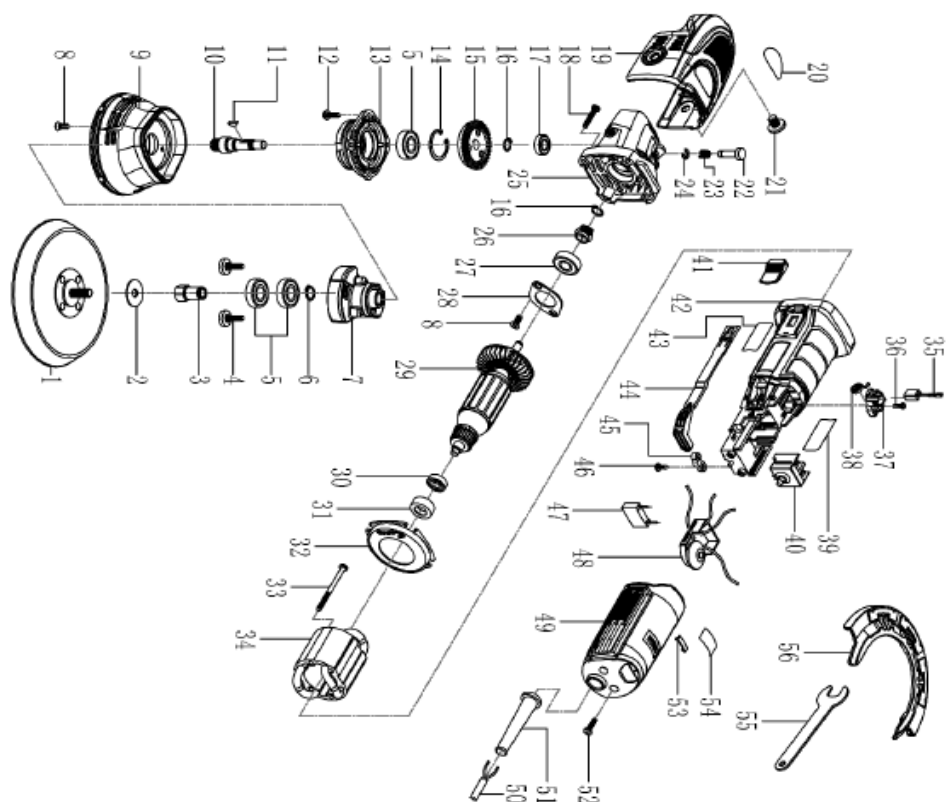
Be sure the switch is in the OFF position.

**MAINTENANCE:**

Please maintain and clean the necessary parts i.e. brushes, bearings & gears.

MODEL	DAP125
φ POLISHING FOAM mm	125/150
φ BACKING PAD mm	125/150
φ ORBITL mm	9
POWER W	750
R.P.M.	2000-6400
WEIGHT kgs	2.3
SPEED CONTROL	·
PROTECTION CLASS	II
OPERATING VOLTAGE	230V-50HZ

#### Machine Diagram



### Parts List

### Spare Part List

No	Name	Qty	No	Name	Qty
1	Backing pad	1	32	Bearing shroud	1
2	Epoxy spacer	1	33	Elastic collar	1
3	Six angle output shaft	1	34	Cross pan head screw	2
4	Cross pan head screw	2	35	Stator	1
5	Bearing 696-2RS	3	36	Carbon brush	2
6	Elastic collar	1	37	Cross pan head screw	2
7	Counterbalance	1	38	Brush holder	2
8	Cross pan head screw	5	39	Spring coil	2
9	Counterbalance shroud	1	40	Name plate	1
10	Output shaft	1	41	Switch	1
11	Woodruff key	1	42	Switch push rod	1
12	Cross pan head screw	4	43	Body housing	1
13	Front cover	1	44	Trade mark	1
14	Elastic collar	1	45	Push rod	1
15	Large gear	1	46	Cable plate	1
16	Elastic collar	2	47	Cross pan head screw	2
17	Bearing 696-2RS	1	48	Capacitance	1
18	Cross pan head screw	4	49	Speed controller	1
19	Gear housing shroud	1	50	Rear cover	1
20	Gear housing shroud label	1	51	Plug	1
21	Plastic screw	2	52	Cable shroud	1
22	Self-lock pin	1	53	Cross pan head screw	2
23	Self-lock pin coil	1	54	Power and brush indicator	1
24	Split washer	1	55	Power and brush indicator label	1
25	Gear housing	1	56	Wrench	1
26	Small gear	1	57	Hand rest	1
27	Bearing 6000-2RS	1			
28	Bearing plate	1			
29	Rotor	1			
30	Magnetic ring	1			
31	Bearing 607-2RS	1			

### Seller Details:

### DECLARATION OF CONFORMITY



EC – Declaration of Conformity according to;

Machinery Directive 2006/42/EC  
 Restriction of Hazardous Substances Directive 2011 / 65 / EU  
 Electromagnetic Compatibility Directive 2014/30/EU

We, **Toolsave Limited**, located at **Unit C, Manders Ind. Est., Old Heath Road, Wolverhampton, WV1 2RP, United Kingdom**, declare in exclusive responsibility that the **Dual Action Polisher** meets the essential health and safety requirements of the above-mentioned directives.

To ensure presumption of conformity, the product has been assessed for compliance with the following directives and standards either in part or in full.

Directive	Requirements and / or Standards applied
Machinery Directive 2006/42/EC	EN 61029-1:2009+A11:2010 EN 61029-2-1A:2012+A11:2013
RoHS 2 Directive 2011 /65 / EU	Directive 2011/65/EU
Electromagnetic Compatibility Directive 2014/30/EU	EN 55014-1:2006/A2:2011 EN 55014-2:1997/A2:2008 EN 61000-3-2:2014 EN 61000-3-11:2000

TCF reference no. : DAP125

Name: Bill Evans

Title: Company Director

Signature:



12/08/2020







**TOOLSAVE**

**UNIT C MANDERS INDUSTRIAL ESTATE**

**WOLVERHAMPTON WV1 2RP**





