

ORIGINAL INSTRUCTION



Warnings

1. Read and understand the entire owner's manual before attempting assembly or operation.
2. Read and understand the warnings posted on the machine and in this manual. Failure to comply with all of these warnings may cause serious injury.
3. Replace the warning labels if they become obscured or removed.
4. This Oscillating Edge Sander is designed and intended for use by properly trained and experienced personnel only. If you are not familiar with the proper and safe operation of an edge sander, do not use until proper training and knowledge have been obtained.
5. Do not use this machine for other than its intended use.
6. Always wear approved safety glasses/face shields while using this Oscillating Edge Sander. Everyday eyeglasses only have impact resistant lenses; they are not safety glasses.
7. Before operating this edge sander, remove tie, rings, watches and other jewelry, and roll sleeves up past the elbows. Remove all loose clothing and confine long hair. Non-slip footwear or anti-skid floor strips are recommended. Do **not** wear gloves.
8. Wear ear protectors (plugs or muffs) during extended periods of operation.
9. Some dust created by power sanding, sawing, grinding, drilling and other construction activities contain chemicals known to cause cancer, birth defects or other reproductive harm. Some examples of these chemicals are:
 - Lead from lead based paint.
 - Crystalline silica from bricks, cement and other masonry products.
 - Arsenic and chromium from chemically treated lumber.Your risk of exposure varies, depending on how often you do this type of work. To reduce your exposure to these chemicals, work in a well-ventilated area and work with approved safety equipment, such as face or dust masks that are specifically designed to filter out microscopic particles.
10. Do not operate this machine while tired or under the influence of drugs, alcohol or any medication.
11. Make certain the switch is in the **OFF** position before connecting the machine to the power source.
12. Make certain the machine is properly grounded.
13. Make all machine adjustments or maintenance with the machine unplugged from the power source.
14. Form a habit of checking to see that all extra equipment such as adjusting keys, wrenches, scrap, stock, and cleaning rags are removed away from the machine before turning on.
15. Keep safety guards in place at all times when the machine is in use. If removed for maintenance purposes, use extreme caution and replace the guards immediately when maintenance is complete.
16. Make sure the edge sander is firmly secured to the floor before use.
17. Check damaged parts. Before further use of the machine, a guard or other part that is damaged should be carefully checked to determine that it will operate properly and perform its intended function. Check for alignment of moving parts, binding of moving parts, breakage of parts, mounting and any other conditions that may affect its operation. A guard or other part that is damaged should be properly repaired or replaced.
18. Provide for adequate space surrounding work area and non-glare, overhead lighting.
19. Keep the floor around the machine clean and free of scrap material, oil and grease.

Warnings

20. Keep visitors a safe distance from the work area. **Keep children away.**
21. Make your workshop child proof with padlocks, master switches or by removing starter keys.
22. Give your work undivided attention. Looking around, carrying on a conversation and “horse-play” are careless acts that can result in serious injury.
23. Maintain a balanced stance at all times so that you do not fall or lean against the sanding belt or other moving parts. Do not overreach or use excessive force to perform any machine operation.
24. Use the right tool at the correct speed and feed rate. Do not force a tool or attachment to do a job for which it was not designed. The right tool will do the job better and safer.
25. Use recommended accessories; improper accessories may be hazardous.
26. Maintain machinery with care. Follow instructions for lubricating and changing accessories.
27. Turn off the machine before cleaning. Use a brush or compressed air to remove dust or debris — do not use your hands.
28. Do not stand on the machine. Serious injury could occur if the machine tips over.
29. Never leave the machine running unattended. Turn the power off and do not leave the machine until it comes to a complete stop.
30. At all times hold the stock firmly.

Familiarise yourself with the following safety notices used in this manual:

CAUTION This means that if precautions are not heeded, it may result in minor injury and/or possible machine damage.

WARNING This means that if precautions are not heeded, it may result in serious injury or possibly even death.

Specifications

- | | |
|---------------------------------------|---|
| 1) Work table size (mm): 850 X 300 | 5) Dust chute diameter (mm):100 |
| 2) Table travel (mm): 80(up and down) | 6) Motor (W): 2200W |
| 3) Belt size (mm): 2515 X 152 | 7) Packing size (mm):1330x760x1130 (one case) |
| 4) Fence size (mm) : 700 x 60 | |

The above specifications were current at the time this manual was published, but because of our policy of continuous improvement, the manufacturer reserves the right to change specifications at any time and without prior notice, without incurring obligations.

Operation



FIGURE 1

BELT IN VERTICAL POSITION AND PLUNGING TABLE LOCKED AT LOWEST POSITION.



FIGURE 3

SANDING TABLE CAN BE ADJUSTED 90° - 180°, BELT IN HORIZONTAL POSITION.

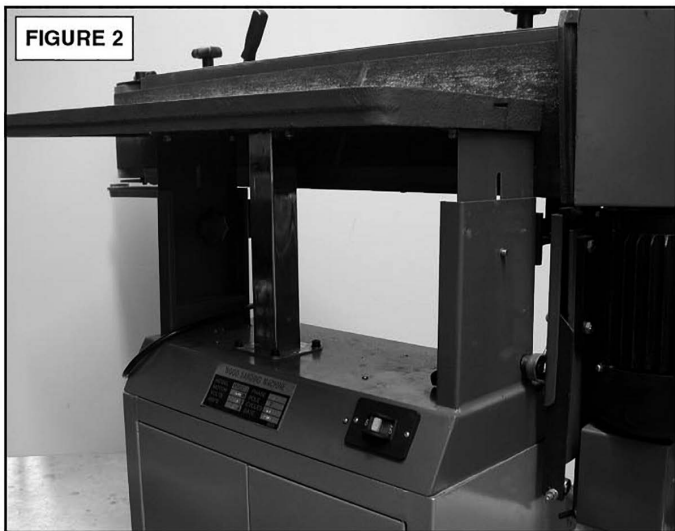


FIGURE 2

BELT IN VERTICAL POSITION AND PLUNGING TABLE RELEASED. ALLOWS BETTER USE OF BELT AND HELPS PREVENT BURNING.

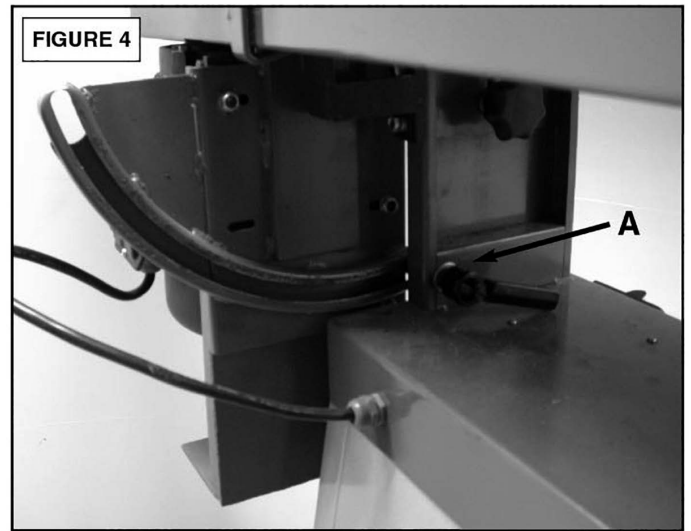


FIGURE 4

LOOSEN ANGLE LOCK KNOB (A) TO SET AND TIGHTEN THE ANGLE.



FIGURE 5

MITER GAUGE CAN BE ADJUSTED 45° - 90° AND CLAMPED BY HEX HANDLE - FOR SANDING MITRE ANGLES.



FIGURE 9

FOR CONTOUR SANDING.



FIGURE 6

LOOSEN BELT TENSION LEVER TO REMOVE AND REPLACE BELT. RETURN LEVER TO TIGHT POSITION BEFORE STARTING.

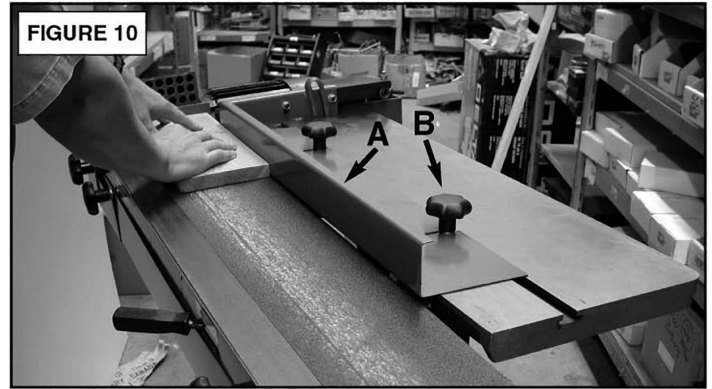


FIGURE 10

MOUNT LOCATING PLATE (A) FOR FLAT SANDING, ADJUST TO ANGLE IF NEEDED. ADJUST KNOB TO CLAMP BRACKET (B) FOR SECURING JOB. USE SECONDARY FENCE WHILE USING SANDER IN THE HORIZONTAL POSITION



FIGURE 7

ADJUST ROLLER TO TRACK BELT WHILE SANDER IS RUNNING.



FIGURE 11

BUILT IN DUST HOOD WITH 4" OPENING.

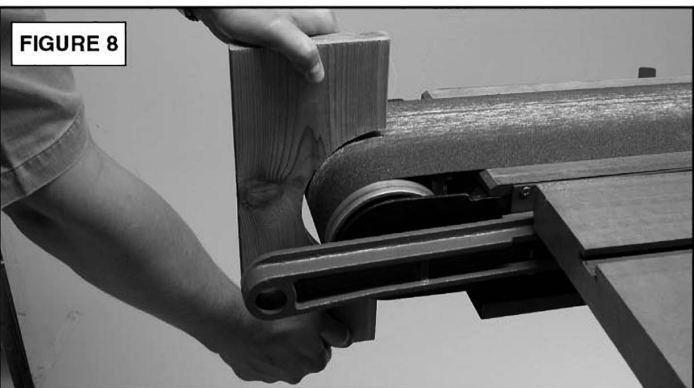


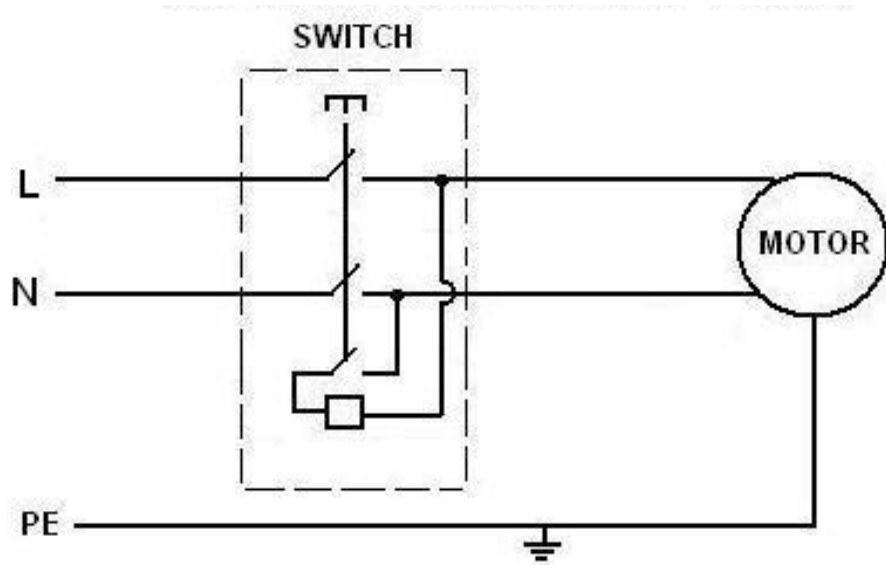
FIGURE 8

FOR CONTOUR SANDING.

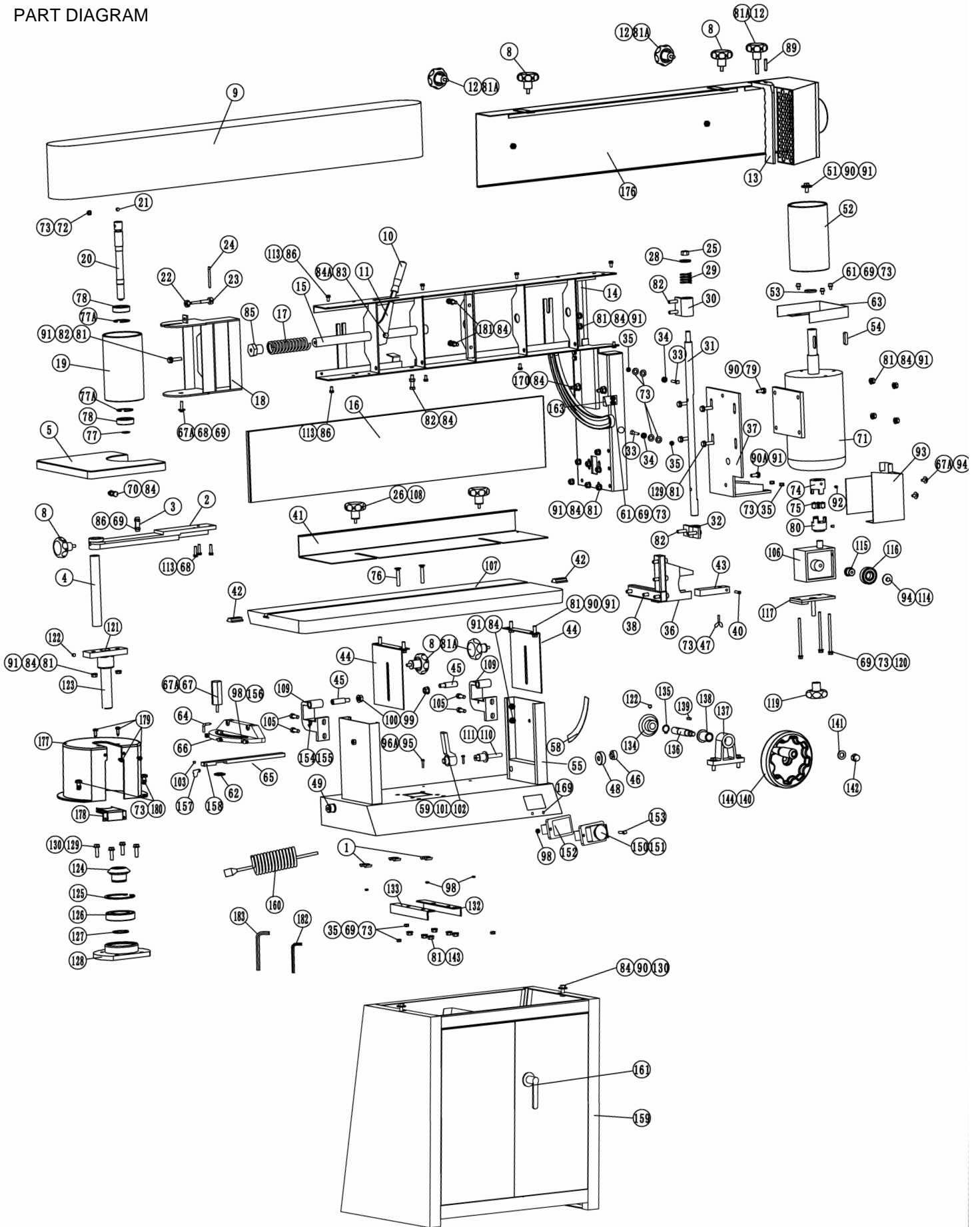
Troubleshooting Operating Problems

Trouble	Possible Cause	Solution
Sander will not start	<ol style="list-style-type: none"> 1. Sander unplugged from wall or motor 2. Fuse blown or circuit breaker tripped 3. Cord damaged 	<ol style="list-style-type: none"> 1. Check all plug connections 2. Replace fuse or reset circuit breaker 3. Replace cord
Sanding belt does not come up to speed	<ol style="list-style-type: none"> 1. Extension cord too light or too long 2. Motor not wired for proper voltage 3. Low current 	<ol style="list-style-type: none"> 1. Replace with adequate size and length cord (see <i>Recommended Extension Cord Gauges</i> on page 6) 2. Refer to motor junction cover for proper wiring 3. Contact a qualified electrician
Machine vibrates excessively	<ol style="list-style-type: none"> 1. Stand on uneven floor 2. Motor mounts are loose 3. Tension spring is worn or broken 	<ol style="list-style-type: none"> 1. Adjust stand so that it rests evenly on the floor 2. Tighten motor mount bolts 3. Replace spring
Abrasive belt keeps tearing	<ol style="list-style-type: none"> 1. Belt is running in the wrong direction 	<ol style="list-style-type: none"> 1. Arrow on the sanding belt and machine should be pointing in the same direction.
Sanded edge not square	<ol style="list-style-type: none"> 1. Table not square to sanding plate 	<ol style="list-style-type: none"> 1. Use a square to adjust table to sanding plate
Sanding marks on wood	<ol style="list-style-type: none"> 1. Wrong grit sanding belt 2. Feed pressure too great 3. Sanding against the grain 	<ol style="list-style-type: none"> 1. Use coarser grit for stock removal and fine grit for finish sanding. 2. Never force work into sanding plate 3. Sand with the grain

Wire Diagram



PART DIAGRAM



PART LIST

1	Cord-Pressed Plate
2	Locating Arm
3	Locating Plate
4	Extension Support
5	Extension Table
8	Handle
9	Sanding Belt
10	Handle
11	Sand Clamp Handle
12	Handle
13	Bracket
14	Sanding Belt Platform
15	Tension Bar
16	Table
	Graphite paper
17	Spring
18	Roller Arm
19	Driver Roller
20	Shaft
21	Globular Sleeve
22	Micro-Inching Nut
23	Micro-Inching Screw
24	Driver Wrench
25	Nut M12
26	Handle
28	Washer
29	Spring
30	Upper guide Sleeve
31	Sliding Axle
32	Lower guide Sleeve
33	Bolt
34	Ball Bearing 607
35	Nut M6
36	Ball Bearing Plate
37	Motor Plate
38	Screw
40	Pin Screw
41	Locating Plate
42	Locating Block
43	Nylon Block
44	Lifting Plate
45	Screw
46	Locking Bolt
47	Swing Screw M6X16

48	Nylon Pad
49	Clamper M20X1.5
51	Packing
52	Motor Roller
53	Motor Washer
54	Key 8X35
55	Base
58	Scale
59	Big Locking Handle
61	Screw M6X12
62	Nut
63	Motor cover
64	Pointer
65	Sliding Block
66	Angle
67	Handle
67A	Washer
68	Bolt
68A	Bolt M6X12
69	Spring Washer
70	Bolt M8x30
71	Motor
72	Nut
73	Packing 6
74	Shaft Coupling
75	Elastomer
76	Screw
77	"C"Ring19
77A	"C"Ring42
78	Ball Bearing6004--2RZ
79	Packing 8
80	Shaft Coupling
81	Washer 8
81A	Washer 8
82	Bolt M8x35
83	Bolt M8x45
84	Nut M8
84A	Locking Nut M8
85	Nut
86	Bolt M6x12
89	Spring Pin 6x32
90	Bolt M8X25
90A	Bolt M8X20
91	Spring Washer 8
92	Set Screw M 6x10
93	Protection Box
94	Bolt M6x10

95	Screw
96A	Washer
98	Hex Nut M4
99	Hex Nut M10
100	Washer 10
101	Screw
102	Spring
103	Set Screw M6x6
104	
105	Screw M8x25
106	Speed-Down Box
107	Table A
108	Washer 6
109	Bent Plate
110	Clamping Bolt
111	Special Washer
113	Star Washer 6
114	Washer
115	Axle Screw
116	Ball Bearing6204-2z
117	Pressure Plate
118	Pressure block
119	Handle
120	Bolt m6x110
121	Lifting seat
122	Screw M8X10
123	Lifter shaft
124	Bevel gear I
125	"C" Ring 80
126	Bearing 6208
127	"C" Ring 40
128	Bearing block
129	Bolt M8X30
130	Big washer 8
132	Left angle block
133	Right angle block
134	Bevel gear II
135	"C" Ring 18
136	Spindle
137	Bracket
138	Sleeve
139	Pin 5X5X16
140	Handwheel
141	Big washer 12
142	Nut M12
143	Nut M8
144	Spring

150	Switch KJD18
151	Switch plate gasket
152	Dust box
153	Screw M4X12
154	Pointer
155	Screw M5X10
156	Screw M4X16
157	Bracket
158	Spring Pin 3x6
159	Tool Box A
160	Cable and Plug
161	Lock
163	Pointer
169	Screw M4X12
	Nut M4
	Lock washer 4
	Flat washer 4
	Spring washer 4
170	Screw M8X30
176	Belt cover
177	Bevel gear guard
178	Small guard
179	Screw ST4X10
180	Screw M6X14
181	Screw M8X30
182	Wrench 3
183	Wrench 6

DECLARATION OF CONFORMITY

The Importer:
TOOLSAVE LTD

Unit C, Manders Ind. Est.,
Old Heath Road, Wolverhampton,
WV1 2RP.

Declare that the product:

**Designation: Professional Belt Sander Model:
PBS2515**

Standards & technical specifications referred to:

2006/42/EC	EN 61000-3-2:2014
2014/30/EU	EN 61000-3-3:2013
EN 55014-1:2017	EN 55014-1:2006+A1+A2
EN 55014-2:2015	EN 55014-2:1997+A1+A2

Authorised Technical File Holder: Bill Evans

01/01/2025

The Director

